



# INDIAN SCHOOL AL WADI AL KABIR



<b>CLASS: VI</b>	<b>DEPARTMENT: SCIENCE</b> <b>2021 - 2022</b>	<b>DATE: 23/08/21</b>
<b>TEXTBOOK Q &amp; A</b>	<b>TOPIC:</b> <b>GETTING TO KNOW PLANTS</b>	<b>NOTE: A4 FILE</b> <b>FORMAT</b>
<b>NAME OF THE STUDENT:</b>	<b>CLASS &amp; SEC:</b>	<b>ROLL NO.</b>

## EXERCISES

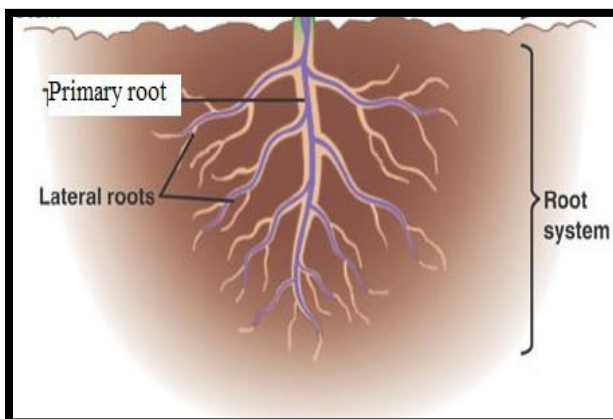
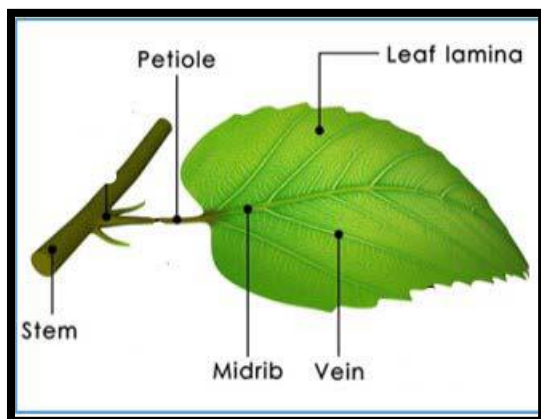
**Q 1.** Correct the following statements and rewrite them in your notebook.

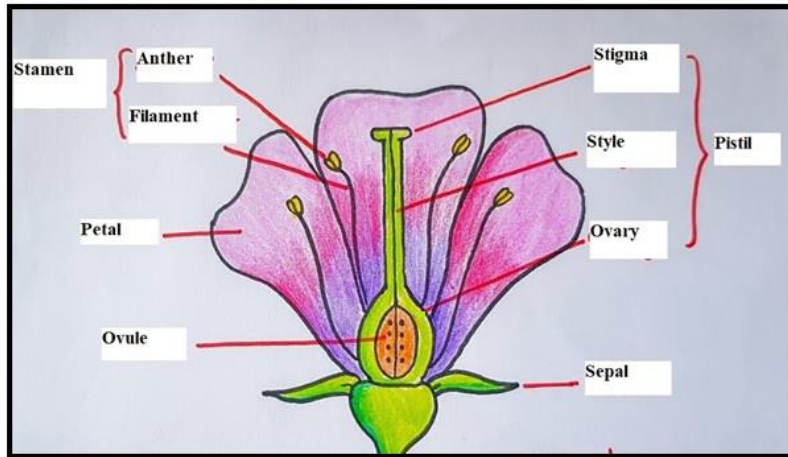
- (a) Stem absorbs water and minerals from the soil.
- (b) Leaves hold the plant upright.
- (c) Roots conduct water to the leaves.
- (d) The number of petals and sepals in a flower is always equal.
- (e) If the sepals of a flower are joined together, its petals are also joined together.
- (f) If the petals of a flower are joined together, then the pistil is joined to the petal.

**Ans:**

- (a) Roots absorb water and minerals from the soil.
- (b) Stems hold the plant upright.
- (c) Stem conducts water to the leaves.
- (d) The number of petals and sepals in a flower may not be always equal.
- (e) If the sepals of a flower are joined together, its petals are not necessarily joined together.
- (f) If the petals of a flower are joined together, then the pistil is not necessarily joined to the petal.

**Q 2.** Draw (a) a leaf, (b) a taproot and (c) a flower, you have studied for Table 7.3.





Q 3. Can you find a plant in your house or in your neighborhood, which has a long but a weak stem? Write its name. In which category would you classify it?

Ans. Yes, we found a money plant in our house. It is a climber.

Q. 4. What is the function of a stem in a plant?

Ans: A stem performs following functions: (i) It holds the plant upright. (ii) It conducts water from roots to different parts of the plant. (iii) It transports food from leaves to different parts of the plant. (iv) It bears leaves, flowers and fruits. (v) In some plants, it is also modified to store food.

Q. 5. Which of the following leaves have reticulate venation?

Wheat, tulsi, maize, grass, coriander (*dhania*), China rose

Ans.

Wheat – Parallel venation

Tulsi – reticulate venation

Maize – Parallel venation

Grass- Parallel venation

Coriander-reticulate venation

China rose- reticulate venation.

Q. 6. If a plant has fibrous root, what type of venation are its leaves likely to have?

Ans: If a plant has fibrous root system, its leaves will have parallel venation.

Q. 7. If a plant has leaves with reticulate venation, what kind of roots will it have?

Ans: If a plant has leaves with reticulate venation, it will have tap root system.

Q. 8. Is it possible for you to find out whether a plant has taproot or fibrous roots by looking at the impression of its leaf on a sheet of paper?

Ans: Yes, it is possible for us to find out whether a plant has taproot or fibrous roots by looking at the impression of its leaf on a sheet of paper. If the plant has fibrous root, then its leaves have parallel venation and if the plant has tap roots, then its leaves have reticulate venation.

Q. 9. Write the names of the parts of a flower.

Ans: The names of various parts of a flower from outside to inside are: (i) Sepals (ii) Petals (iii) Stamen comprises of anther and filament. (iv) Pistil comprises of stigma, style and ovary. Ovary consists of small bead like structures called ovules.

10. Which of the following plants have you seen? Of those that you have seen, which one have flowers? Grass, maize, wheat, chilli, tomato, tulsi, pipal, shisham, banyan, mango, jamun, guava, pomegranate, papaya, banana, lemon, sugarcane, potato, groundnut

Ans:

S. No.	Name of the plant	Whether seen	Whether have flowers
1.	Grass	Yes	Yes
2.	Maize	Yes	Yes
3.	Wheat	Yes	Yes
4.	Chilli	Yes	Yes
5.	Tomato	Yes	Yes
6.	Tulsi	Yes	Yes
7.	Pipal	Yes	Yes
8.	Shisham	Yes	Yes
9.	Banyan	Yes	Yes
10.	Mango	Yes	Yes
11.	Jamun	Yes	Yes
12.	Guava	Yes	Yes
13.	Pomegranate	Yes	Yes
14.	Papaya	Yes	Yes
15.	Banana	Yes	Yes
16.	Lemon	Yes	Yes
17.	Sugarcane	Yes	Yes
18.	Potato	Yes	Yes
19.	Groundnut	Yes	Yes

11. Name the part of the plant which produces its food. Name this process.

Ans: Leaves produce food for the plant through a process called photosynthesis.

12. In which part of a flower you are likely to find the ovary?

Ans: Ovary is the lowermost and swollen part of the pistil.

13. Name two flowers, each with joined and separate+ sepals.

Ans: **Flowers with joined sepals:** (i) Datura (ii) Tomato **Flowers with separate sepals:** (i) Rose (ii) Jasmine (iii) Mustard.

Prepared by Ms. Sobhana Rani P

Checked by : HOD - SCIENCE