

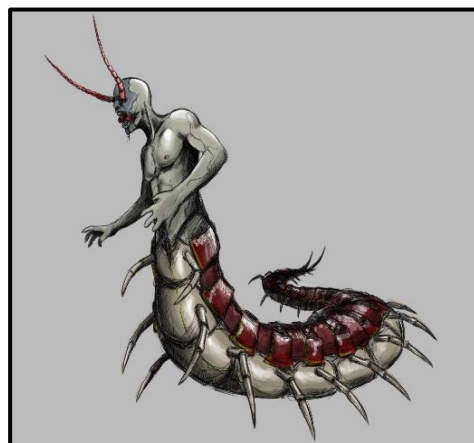


INDIAN SCHOOL AL WADI AL KABIR

Class: VIII	Department: ENGLISH	Date of submission: February 2021
Worksheet No:	Topic: A strange Transformation (Study notes)	Note:

Summary of the Story

- Imagine waking up one morning you find that, you have become a giant insect. This first sentence of the story is something different. Kafka's goal is not to suspend the laws of nature. He is, of course, not saying that it is possible for a man to be transformed into an insect. The point, rather, is that literature does not need to honor the laws of nature. The story takes this one completely impossible event and develops logically out of it.
- The nightmarish and oppressive feeling that Kafka imbues in the story is indicative of his works and today **Kafkaesque** is the adjective used to describe things that present people with the same feelings of nightmare-like horror and a deepening sense of oppression.
- All of the action in the story takes place within Gregor's apartment. This highlights the isolation theme that Kafka builds. Even with the other family members, we see no action outside of the apartment. The only reality is within, just as the real Gregor is within his newly shelled body.





- **Title:** The Strange Transformation
- **Author:** Franz Kafka.
- **Type of Work:** Short story
- **Genre:** Absurdism
- **Narrator:** The narrator is an anonymous figure who recounts the events of the story in a flat, neutral tone.
- **Point of View:** The narrator speaks exclusively in the third person, focusing primarily on the thoughts, feelings, and actions of Gregor Samsa. The narrator only describes events that Gregor sees, hears, remembers, or imagines from the actions around him.
- **Tone:** The narrator's tone is flat and unchanging, describing even the most outlandish events in a neutral fashion.
- **Tense:** Past tense
- **Setting:**
 - ❖ **Time:** Unspecified, though references to trains and streetcars suggest the late-nineteenth century or early twentieth century. *The Transformation* takes place in the small apartment where Gregor lives with his family. Though we aren't given a specific time period, carriages and horses are included in the story, so it's safe to assume that the story is set in a time before automobiles.
 - ❖ **Place:** The Samsa family's apartment in an unspecified city.
- **Protagonist:** Gregor Samsa
- **Major Conflict:** Gregor Samsa struggles to reconcile his humanity with his transformation into a giant bug.
- **Rising Action:** When Gregor Samsa wakes up inexplicably transformed into a giant bug, he must handle the consequences in terms of his understanding of himself and his relationship with his family.
- **Themes:** The absurdity of life; the disconnect between mind and body; the limits of sympathy; alienation.

❖ **WEB RESOURCES :**

❖ <https://youtu.be/ouLJfl1-vY>

❖ <https://youtu.be/8DfrBcjisVo>