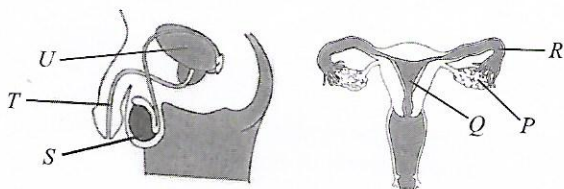


37. Refer to the given statements and select the option that correctly fills blanks in them.

- I. Suspended particulate matter in air is also known as _____.
- II. Smog contains oxides of nitrogen and _____.
- III. _____ lowers amount of oxygen entering our blood and also slows down our reflexes.

I	II	III
A. Aerosol	Hydrocarbons	Carbon monoxide
B. Aerosol	Sulphur	Carbon dioxide
C. CFCs	Hydrocarbons	Carbon dioxide
D. CFCs	Sulphur	Carbon monoxide

38. Refer to the given figures of male and female reproductive systems.



Select the incorrect option regarding them.

- A. *P* and *S* are the primary sex organs present in females and males, respectively.
- B. *T* is an organ that deposits sperms into *Q* of the females.
- C. *R* is the site where fusion of male and female gametes takes place.
- D. *T* releases content of both *S* and *U*.

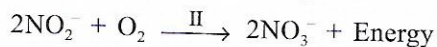
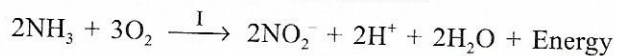
39. Read the given statements and select the correct option.

Statement 1 : Extensive use of fossil fuels possesses dual problem, it increases air pollution and depletes fuel resources.

Statement 2 : Combustion of fossil fuels releases oxides of nitrogen and sulphur, which consequently cause acid rain and smog.

- A. Both statements 1 and 2 are true and statement 2 is the correct explanation of statement 1.
- B. Both statements 1 and 2 are true but statement 2 is not the correct explanation of statement 1.
- C. Statement 1 is true and statement 2 is false.
- D. Both statements 1 and 2 are false.

40. The equation given below represents process of conversion of ammonia into nitrates.



Identify the option that can be correctly placed at I and II respectively.

I	II
A. <i>Nitrobacter</i>	<i>Aspergillus</i>
B. <i>Nitrosococcus</i>	<i>Penicillium</i>
C. <i>Aspergillus</i>	<i>Nitrosomonas</i>
D. <i>Nitrosomonas</i>	<i>Nitrosococcus</i>

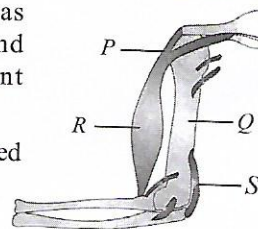
41. Select the correctly matched pair.

Disease	Mode of transmission
I. AIDS	– Unprotected sex
II. Hepatitis B	– Contaminated food
III. Malaria	– Direct contact
A. I only	B. I and II only
C. II and III only	D. I and III only

42. Unicellular algae *X* and *Y* of the same species were taken and experimentally chloroplasts were removed from cell *X*. After some time, they both were kept in bright sunlight for few hours and then iodine test was performed on them. What will be the result?

- A. Both *X* and *Y* will turn blue-black.
- B. Cell *X* will turn blue-black.
- C. Cell *Y* will turn blue-black.
- D. Both *X* and *Y* will remain as they originally were.

43. Identify the parts labelled as *P-S* in the given figure and select the correct statement regarding them.

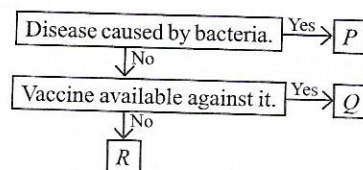


- A. *P* is a tendon which is formed of yellow elastic fibres.
- B. *Q* is a bone having matrix entirely made of organic matter.
- C. *R* is a muscle that shows alternate light and dark striations and helps in voluntary movement.
- D. *S* is a ligament which is formed of white fibrous tissue.

44. Refer to the given statements and select the option that correctly fills the blanks in any two of them.

- I. Mechanical method of sowing involves the use of a _____.
- II. Blight of potato is a _____ disease.
- III. _____ is a traditional method of irrigation.
- IV. _____ is a common weedicide.
- A. I – Tractor II – Viral
- B. II – Viral III – Dhekli
- C. III – Rahat IV – Malathion
- D. I – Seed drill IV – Metolachlor

45. Study the given flow chart and select the correct option.



- A. *P* could be leprosy whereas *Q* could be polio.
- B. *R* could be common cold whereas *P* could be mumps.
- C. *P* could be tetanus whereas *Q* could be common cold.
- D. *R* could be small pox whereas *Q* could be typhoid.