

26. Read the given statements and select the correct option.
 Statement 1 : Naphthalene balls are kept in open air in order to maintain their state.
 Statement 2 : The process of conversion of a solid into the liquid state on heating is called sublimation.
- Both statements 1 and 2 are true and statement 2 is the correct explanation of statement 1.
 - Both statements 1 and 2 are true but statement 2 is not the correct explanation of statement 1.
 - Statement 1 is true but statement 2 is false.
 - Both statements 1 and 2 are false.

27. Which of the following methods are not correctly matched for separating the given mixtures?
- Common salt and camphor – Sublimation
 - Sugar and water – Condensation
 - Iron filings and wheat flour – Magnetic separation
 - Sawdust and stones – Filtration
 - Cream and milk – Evaporation
- I and III only
 - II and V only
 - II, IV and V only
 - I, II, III, IV and V

28. Observe the changes shown in figure 1 and figure 2 carefully.

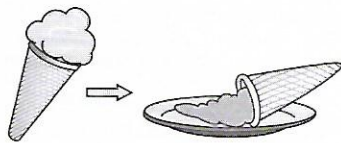


Figure 1

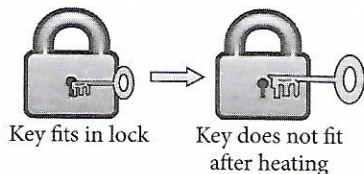


Figure 2

Which of the following statements is correct?

- In figure 1, particles get more orderly arranged.
 - In figure 2, contraction takes place.
 - In figure 2, energy is released.
 - In figures 1 and 2, physical-reversible changes take place.
29. Select the correct statement.
- Dry ice is a homogeneous mixture.
 - Smoke is an example of heterogeneous mixture.
 - Brass is a compound.
 - Hydrogen, bromine and silver, all are solid elements.
30. Shreya wanted to prepare salad for lunch using products obtained from different plant parts.
 If she decided to use all plant parts, her salad would contain
- Broccoli, carrot, cucumber, radish, tomato and beetroot
 - Lettuce, carrot, tomato, lemon, spinach and cabbage

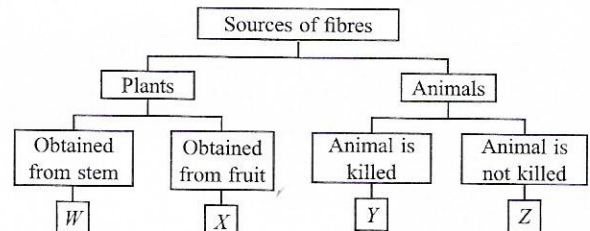
- Lettuce, broccoli, cucumber, carrot, onion and corn
- Broccoli, cauliflower, tomato, carrot, beetroot and radish.

31.

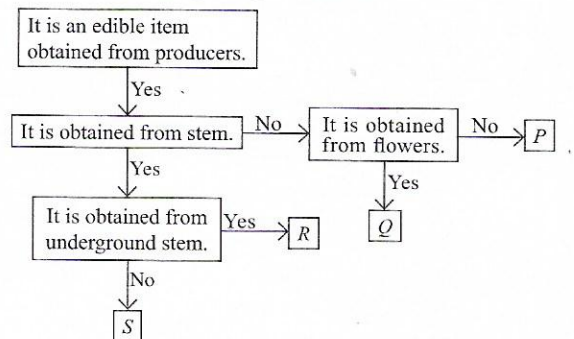


What is a common character of the above shown animals?

- They all live in water.
 - They all lack backbone.
 - They all have scales on their body.
 - They all lay eggs to reproduce.
32. Refer to the given relationship and select the option that satisfies the same relationship.
- Pumice : Sandstone : Gneiss
- Obsidian : Conglomerate : Slate
 - Shale : Granite : Quartzite
 - Marble : Basalt : Shale
 - Conglomerate : Marble : Basalt
33. Refer to the given flow chart and select the correct option.



- X – Flax, Y – Silk
 - W – Cotton, Y – Silk
 - W – Flax, Z – Wool
 - X – Jute, Z – Wool
34. Refer to the given flow chart and select the correct option regarding P, Q, R and S.



- R could be potato or ginger whereas S could be sugarcane or *Asparagus*.
- Q could be cauliflower or tomato whereas P could be broccoli or okra.
- P could be sweet potato or radish whereas S could be cumin or fenugreek.
- R could be turmeric or zamikand whereas S could be fennel or spinach.